

Name _____

Date _____

8 MA - Unit 6 - Equations
Study Guide for test

Part I

Solve the Equations.

1) $2(5x - 2) = 8x$

2) $-17 = 2x - 3$

3) $3(4x - 2) = 2(6x - 3)$

4) $5(x + 7) = 5x + 8$

5) $2.5x - 3 = 7 + 5.5x$

6) $\frac{1}{4}x + 6 = \frac{1}{2}$

7) $\frac{3}{7}x = \frac{1}{8}$

8) $4x - 3 = 2x - 3$

Part II

Write the sentence as an equation, then solve.

9. Twice a number is equal to ~~8.5~~ 8.5.

10. The sum of -31 and a number equal to -17 .

11. The difference of a number and 8 is three times the number.

12. The quotient of a number and 6 equals $\frac{1}{4}$.

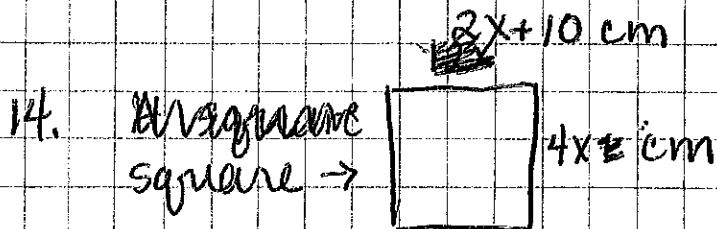
Part III

Solve the problems.

13. You have \$50 and save \$8 each month.
a) your brother has \$90 and saves \$6 each month. After how many months will you both have the same amount of money?

b) How much will each of you have after that many months?

- c) If you pool your money, will you have enough to purchase a new \$400 PlayStation 4 Pro?
~~How much?~~



what is the perimeter?